



pureOne[®]

Pure • Fresh • Clean

Delivering Excellence in

Water and Wastewater Treatment Solutions

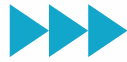
INTRODUCTION

Pureone water industries India Pvt. Ltd. is turnkey Pharmaceutical, Industrial, Commercial & Drinking water system Manufacturing Company, Providing Solutions from source to Point of use. We have 30 years hands on industries experience with us.

Our knowledge in water system, Manufacturing capabilities, Project management Experience & Service Support enable us to deliver customized solutions for all kind of Water treatment needs.

It is challenge to maintain the consistency of water considering Variation in RAW water parameters.

COMPLETE SOLUTIONS FOR WATER TREATMENT UNDER ONE ROOF



- ✦ Standard Industrial RO system 250 to 10000 LPH
- ✦ Commercial RO for Drinking 25 to 150 LPH
- ✦ Purified Water Generation
- ✦ Storage & Distribution Systems for PW & WFI
- ✦ Side stream filtration for Swimming pool & cooling towers.
- ✦ Water coolers & Dispensers
- ✦ Sewage Treatment plant
- ✦ Commercial RO for Drinking 25 to 150 LPH
- ✦ Filtration System
- ✦ Softening system
- ✦ Ultrafiltration system

MISSION

Explore new opportunities and optimise design & engineering processes by standardization and strictly adhering to the quality and safety standards. Also to offer solutions to new challenges in the respective areas of application.

VALUES

The core values of our organization are positive attitude, innovation, ethics, openness, quality management & teamwork.



HUMANITY



TRUST



INNOVATIVE



INTEGRITY



TRANSPARENCY



CUSTOMER DELIGHT

RO Plants for Industrial Water Treatment

Application of PureOne Industrial RO system.

- Bore well & Surface water Purification for drinking, PCC curing & household application.
- Municipal & Rural water purification .
- Generation of potable water .
- Designation of Sea & Brackish water
- Effluent Recycling system
- Boiler & Cooling tower feed water
- Bottled water Production with BIS .
- Pharmaceutical water Purification.
- Food & Cosmetic products



TECHNICAL SPECIFICATION

Powder coated carbon steel frame
8" TFC spiral wound membranes
Stainless steel multi-stage pump with TEFC motor
FRP membrane housings
5 micron cartridge prefilter
Microprocessor based control panel
Programmable time delay and set points
LCD screen Motor starter NEMA 12 enclosure
Low pressure switch
High pressure switch
Liquid filled pressure gauges
Permeate conductivity monitor
Permeate & concentrate flow meters



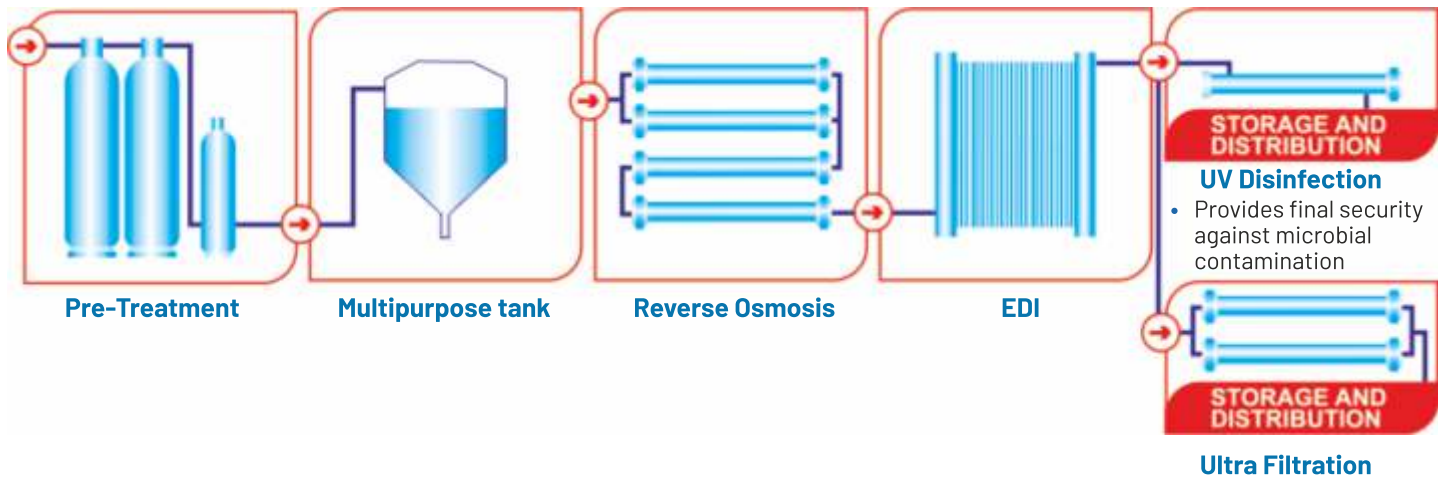


Purified Water Generation Systems

PureOne RO+EDI plants are fully designed in compliance with the standards requested by International Pharmacopoeias, used in Pharma & Semiconductor Induction.

PureOne standard plants can cover a range of production from 0.3 m³/hr to 15. m³/hr.

PureOne RO-EDI Systems



USP Standards for Water Purity

	USP Purified	USP WFI
pH	5.0-7.0	5.0-7.0
Conductivity*	1.3 μ S/cm	1.3 μ S/cm
TOC	500 ppb	500 ppb
Bacteria	100 cfu/ml	10 (cfu/100mL)
FDA Action Limit	100 cfu/ml	10 (cfu/100mL)
Endotoxins	N/A	0.25 EU/ml

Please refer to USP article 645, Water Conductivity for specific stage 1, 2 and 3.

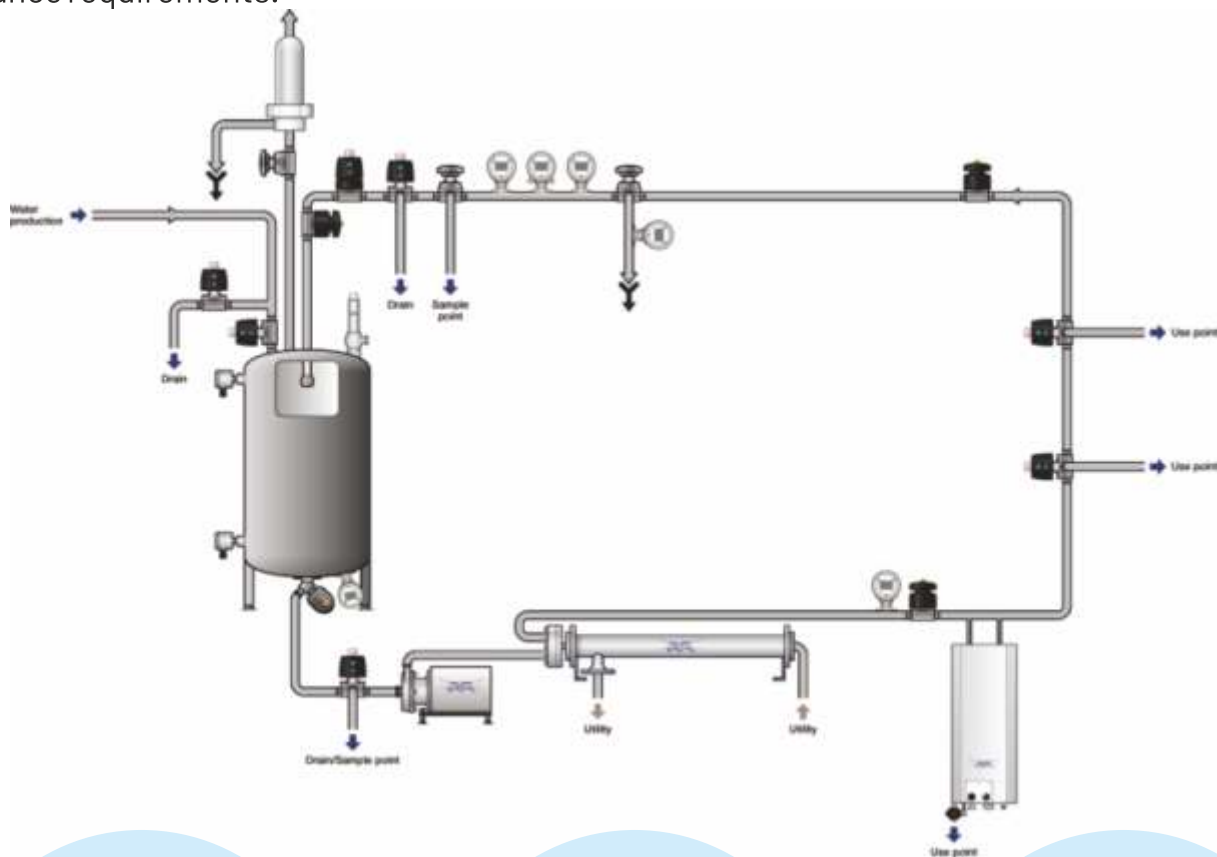


Storage and Distribution system

Storage & Distribution loop & Process Piping.

Storage and Distribution plays a critical role in a complete water solution as purified water, highly purified water and water for injection have to be safely distributed to its points of use without contamination, maintaining its quality, flow rate and temperature.

PureOne follows cGMP guidelines for storage and distribution to meet increasing quality and compliance requirements.



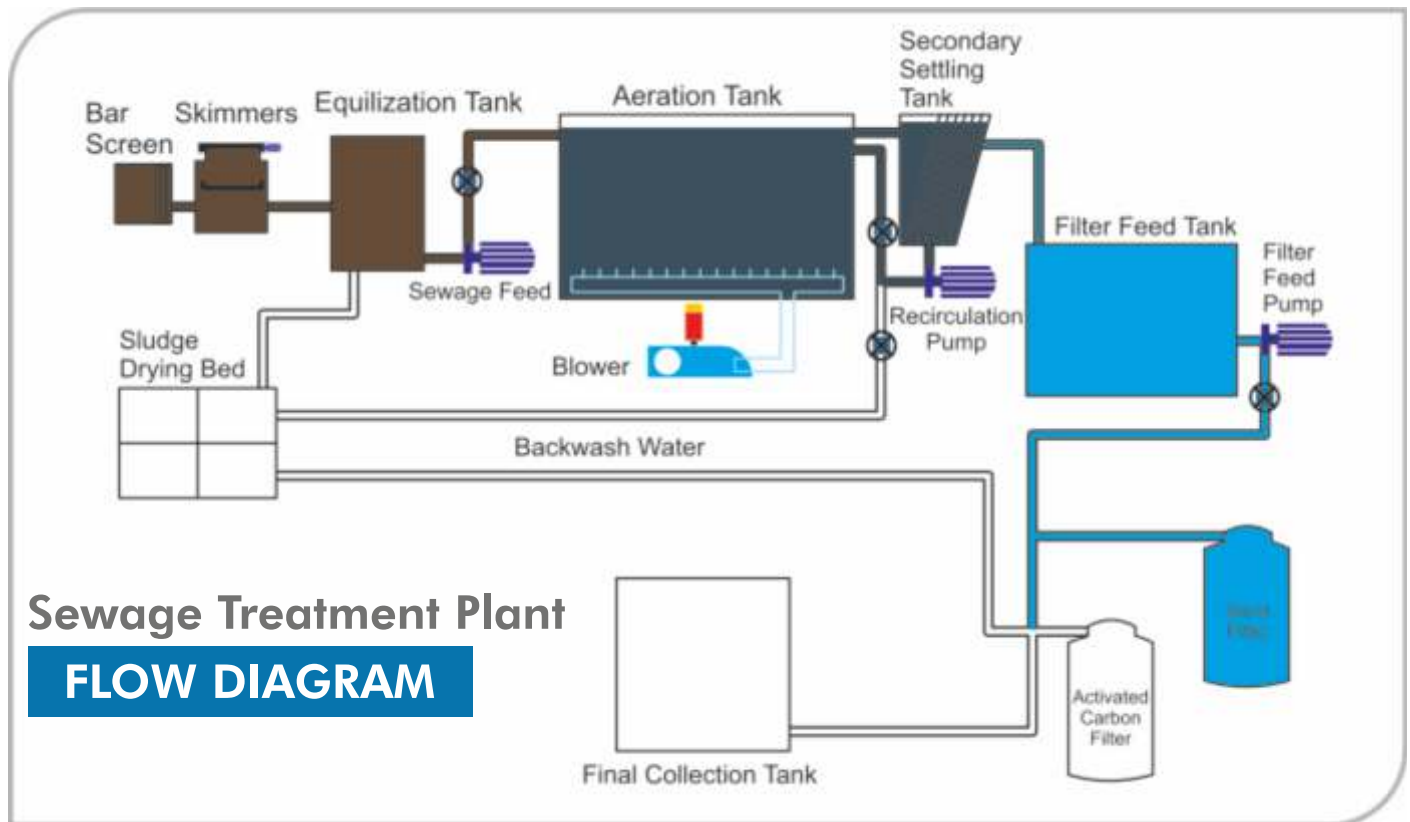
- Hot water sanitisation at $> 80^{\circ} \text{C}$
- Imported SS316 L tubes with original certificates with mill finish $< 0.8 \text{Ra}$, after EP: $0.3 - 0.5 \text{Ra}$.
- All pumps, UV steriliser & fittings in sanitary construction

- Orbitally welded with printout facility
- Built around ISPE and cGMP guidelines
- Fully automatic with SCADA 21 CFR Part 11 compliant

Sewage Treatment Systems

Technologies used Sewage treatment process :

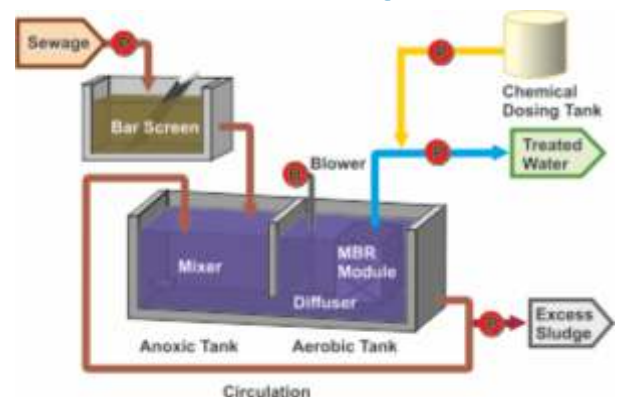
- Extended Aeration
- Activated Sludge Process
- Submerged Aerobic Fixed Film
- MBBR - Moving bed Bio Reactor
- Membrane Bio Reactor
- Sequential Batch Reactors
- Tertiary treatment with stage Media Filtration and Chlorination or Ultrafiltration
- Sludge Dewatering Systems



SEWAGE TREATMENT PLANT HIGHLIGHTS:

- Customized technologies to suit stringent site conditions
- Consistent supply of treated water
- Low operating & maintenance cost
- Minimum foot print area & Low power consumption
- Minimum use of chemicals & Environment friendly systems
- Focus on ease of maintenance while designing
- Trained team for installation & after sales service
- Plants with parameters meeting PCB norms
- Overcomes factors of space and height constraints

General Process Flow Diagram with MBR

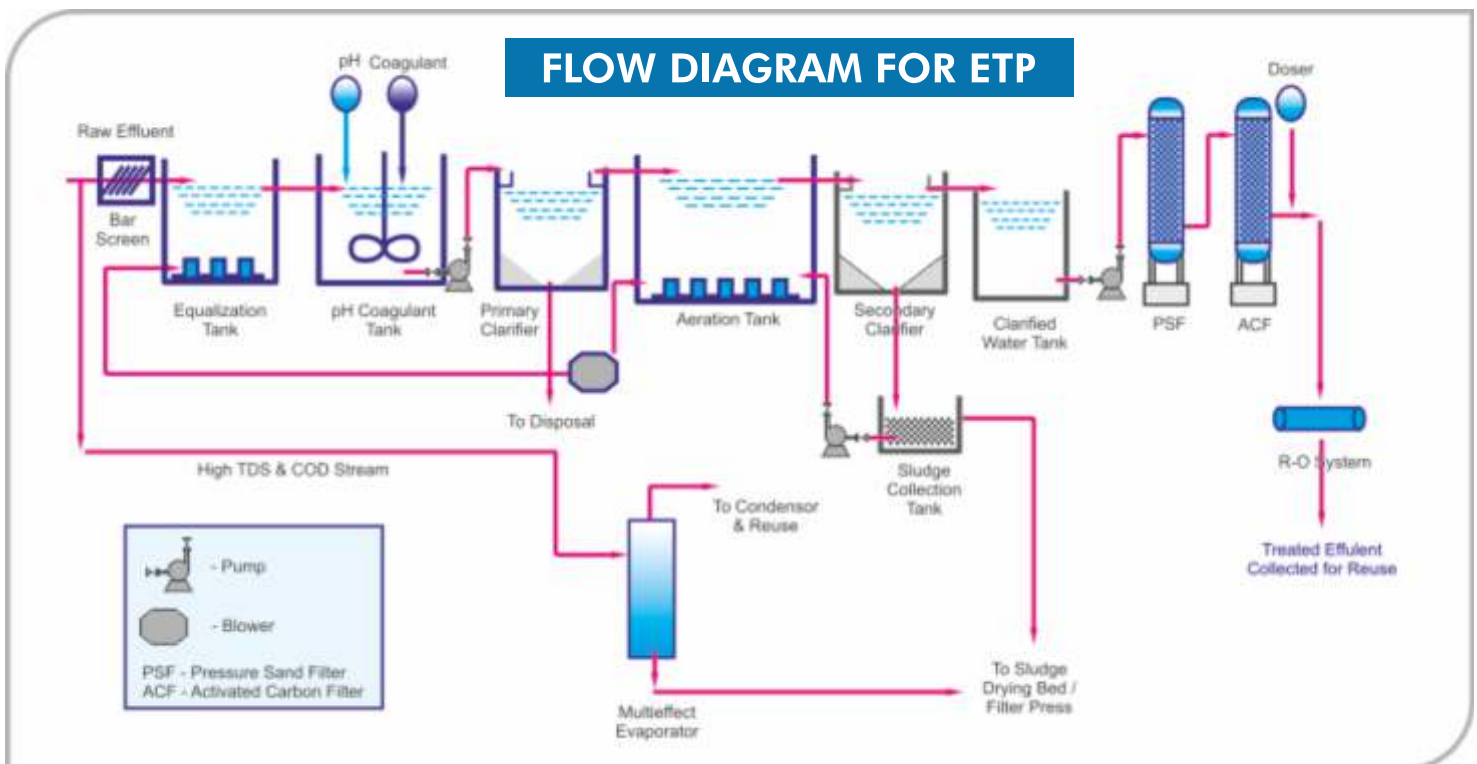




Post ETP UF RO System

PureOne has years of experience in design & supply of ETP UF + RO system from every simple to most challenging streams comprising of solvent, very high turbidity, extreme TDS with combine physio-chemical treatment process with tertiary polishing systems for the removal of organic, inorganic, oil & grease, heavy metals & suspended solids.

Output from our systems are such of high standards that it can be reused within plant or discharge safely back to environment. These advanced system out perform conventional technology & provide consistent supply of potable water as well as non potable water that meets all discharge & reuse regulations.



FEATURES OF PUREONE RECYCLING SYSTEM

- Assured availability of water for process needs as well as low end uses.
- Less requirement of fresh water. Therefore, considerable savings in freshwater costs.
- Additional savings through recovery of valuable by-products for re-use in process.
- Compliance with pollution control regulations and a clean environment through reduced / zero effluent discharge.



UF System



Technical Specification of Softening System

- Capacity** : 100 lph to 100 m³/hr
MOC : FRP/MSEP/MSRL
Piping : PVC/MSEP/MSRL/SS
Operation : Manual / Auto

Applications for Water Softeners

- Food and Beverage
- Manufacturing industries
- Construction sites
- Pharmaceutical
- Service/Tourism
- Agricultural
- Commercial

DM WATER SYSTEMS

Decentralization, the process of removing almost all dissolved salt and mineral ions from water, can be ideal for facilities that require ultrapure water for a variety of applications.

Every DM plant operates on the same basic principle. They use the ion exchange method to remove minerals and other contaminants from water. The purity of the water is determined by the type of DM water plant used.

1. Dm plant type 1 – Cation → Anion → Mix Bed.
2. Dm plant type 2 – Cation → Anion
3. Dm plant type 3 – Cation → Anion → Cation Polisher.

Technical Specification Of DM water System

- Capacity** : 300 lph to 100 m³/hr
MOC : FRP/MSEP/MSRL
Piping : PVC/MSEP/MSRL/SS
Operation : Manual / Auto



Commercial R.O & Water Cooler



RO 25 LPH



RO 50 LPH



RO 100 LPH

Water Cooler



After Sales Support

The target of **PureOne** After Sales service is to ensure a smooth and safe operation of the water production system, always and in every condition.

PureOne After Sales Service is not simply limited to the management of Customers' eventual technical requests but, in a proactive approach, it is based on specialized personnel skills and structure organization to provide a full range of services, including:



Training



Technical Assistance



Revamping

Preventive Maintenance

Preventive maintenance is the best way to grant continuous operation of water systems. **PureOne** developed a complete program of preventive maintenance activities for its systems, which can be customized according to specific situations. During a Preventive Maintenance visit a check-list is executed and, where needed, chemical cleanings, components replacements is performed. Finally a reliability analysis of the system is also performed.

Remote Service

By providing the water production equipment with proper features, it is possible to implement a remote monitoring system, so that **PureOne** After Sales Service can overview "in real time" the status of the production system and better identify the solution of eventual situations.

Critical Spares

Spare parts management is a critical activity due to its direct impact on the life and continuity of operation of a water production system. **PureOne** Spare Parts department is strongly linked to the After Sales Service, so to grant the best synergy between the two departments and provide full solutions to eventual site critical situations, in the final interest of the Customer.

PureOne Spare Part department can provide the following:

Recommended spare parts

Based on its experience on thousands of plants operating worldwide, **PureOne** can propose and supply to the customer a minimum package of critical spares which should be kept at Customer's site. These spares may be used both during periodical preventive maintenance, and in case of failure of a specific component.

Emergency spares

PureOne has developed an internal stock of critical spares. The selection of spares kept in stock by **PureOne** is based on a statistical study performed to identify the most common criticalities.

Our Presence in Various Industries

Packaged Drinking Water Project With ISI Mark



Business Offices, Apartments & Societies



Industrial Water Treatment
ETP & CETP



Laboratories



Dairy Processing



Bio Engineering



Pharmaceutical Industrial



Green Houses



Kidney Dialysis



Poultry Farms



EXPERTISE FIELDS

MICRO,
NANO AND
ULTRA
FILTRATION

REVERSE
OSMOSIS

ION EXCHANGE
(SOFTENING &
DEMINERALIZATION)

ULTRAVIOLET
TREATMENT

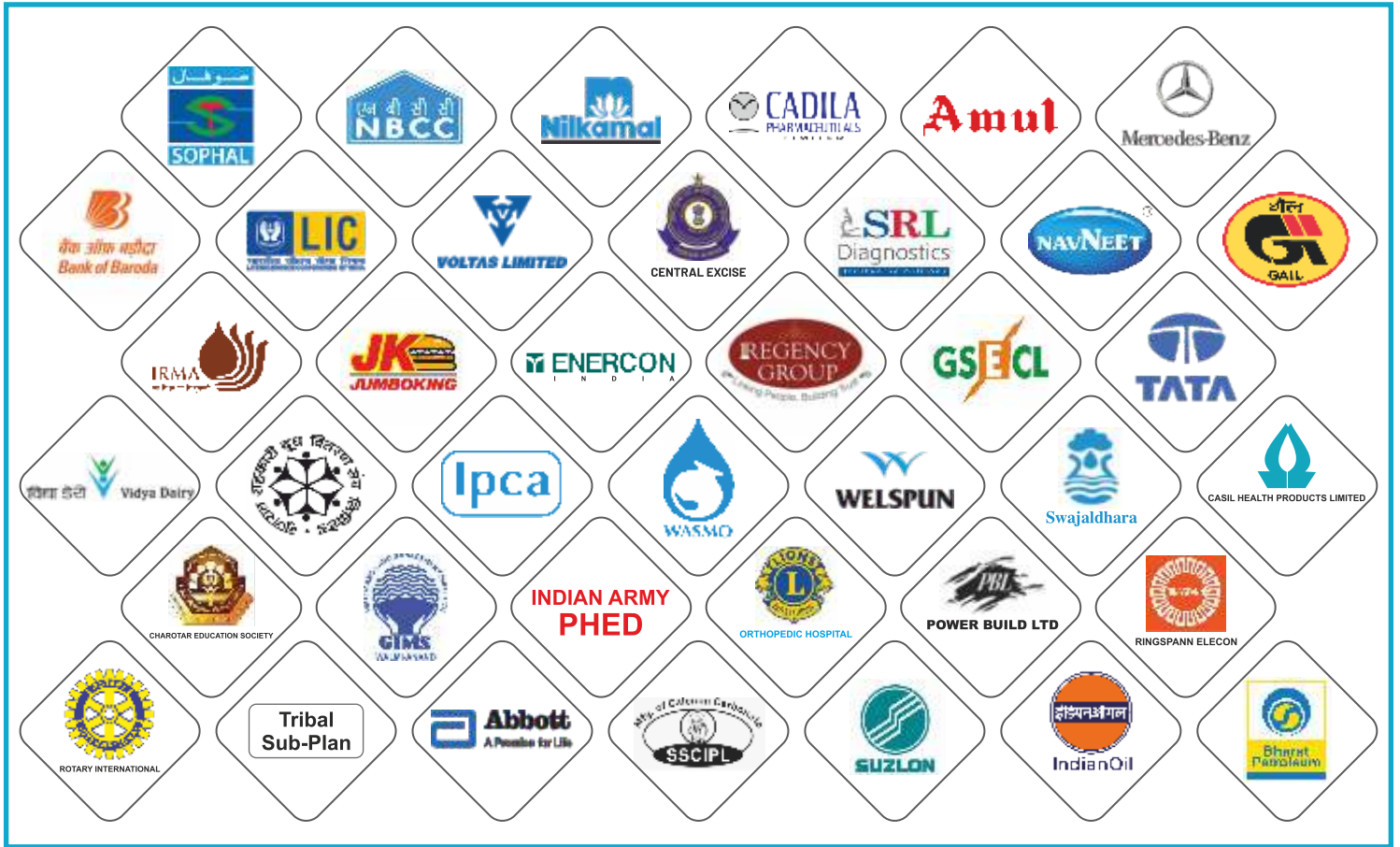
OZONATION

ELECTRODEIONIZATION
(EDI)

MBR
FOR
ETP & STP

MBBR
FOR
ETP & STP

Our Esteemed Customers



Corporate Social Responsibility



pureOne[®]

Pure • Fresh • Clean

W-117, TTC Industrial Area, Pawane MIDC, Koperkhairane, Navi Mumbai - 400 701

operations@pureonero.com | www.pureonero.com

Contact : +91 85913 03205, +91 84258 48081